

NOTICE AND AGENDA OF MEETING

GROUNDWATER SUSTAINABILITY AGENCY
FOR THE WESTERN MANAGEMENT AREA
IN THE SANTA YNEZ RIVER GROUNDWATER BASIN

WILL BE HELD
AT 10:00 A.M., WEDNESDAY, AUGUST 26, 2020

TELECONFERENCE MEETING ONLY – NO PHYSICAL MEETING LOCATION
PUBLIC PARTICIPATION DIAL-IN NUMBER: 1-267-866-0999
PASSCODE: 5740 34 1117

Teleconference Meeting During Coronavirus (COVID-19) Emergency: As a result of the COVID-19 emergency and Governor Newsom’s Executive Orders to protect public health by issuing shelter-in-home standards, limiting public gatherings, and requiring social distancing, this meeting will occur solely via teleconference as authorized by and in furtherance of Executive Order Nos. N-29-20 and N-33-20.

Important Notice Regarding Public Participation in Teleconference Meeting: Those who wish to provide public comment on an Agenda Item, or who otherwise are making a presentation to the GSA Committee, may participate in the meeting using the dial-in number and passcode above. Those wishing to submit written comments instead, please submit any and all comments and materials to the GSA via electronic mail at bbuelow@syrwcd.com. All submittals of written comments must be received by the GSA no later than 5:00 p.m. on Tuesday, August 25, 2020, and should indicate “**August 26, 2020 GSA Meeting**” in the subject line. To the extent practicable, public comments and materials received in advance pursuant to this timeframe will be read into the public record during the meeting. Public comments and materials not read into the record will become part of the post-meeting materials available to the public and posted on the SGMA website.

In the interest of clear reception and efficient administration of the meeting, all persons participating in this teleconference are respectfully requested to mute their phones after dialing-in and at all times unless speaking.

AGENDA

- I. Call to Order
- II. Introductions and review of SGMA in the Santa Ynez River Valley Basin
- III. Additions or Deletions to the Agenda
- IV. Public Comment (Any member of the public may address the Committee relating to any non-agenda matter within the Committee’s jurisdiction. The total time for all public participation shall not exceed fifteen minutes and the time allotted for each individual shall not exceed five minutes. No action will be taken by the Committee at this meeting on any public item.)
- V. Review and consider approval of meeting minutes of May 20, 2020
- VI. Receive WMA GSA Financial update and consider approval of WMA Warrant List
- VII. Receive update and memo from WMA Citizen Advisory Group
- VIII. Receive Staff memo and overview on adjustments to Management Area Boundaries
- IX. Receive update/slide presentation from Stetson Engineers on GSP activities in the WMA
 - a. Stakeholder Outreach

- b. Hydrogeologic Conceptual Model
- c. Water Budget
- d. Groundwater Conditions
- e. Numeric Groundwater Model
- f. GSP Schedule Update
- X. Receive staff update on numeric groundwater model task
- XI. Receive staff update on Aerial Electro-Magnetic Survey of WMA
- XII. Received Communication
- XIII. Next “Special” WMA GSA Meetings: Wednesday, October 14, 2020, 10:00 AM. and Wednesday October 21, 2020, 10:00 AM. Notices will be sent on whether the meeting will be in person or held via conference call
- XIV. Next “Regular” WMA GSA Meeting: Wednesday, November 18, 2020, 10:00 AM. Notice will be sent on whether the meeting will be in person or held via conference call
- XV. WMA GSA Committee requests and comments
- XVI. Adjournment

[This agenda was posted 72 hours prior to the scheduled meeting at 3669 Sagunto Street, Suite 101, Santa Ynez, California, and <https://www.santaynezwater.org> in accordance with Government Code Section 54954. In compliance with the Americans with Disabilities Act, if you need special assistance to review agenda materials or participate in this meeting, please contact the Santa Ynez River Water Conservation District at (805) 693-1156. Notification 72 hours prior to the meeting will enable the GSA to make reasonable arrangements to ensure accessibility to this meeting.]

DRAFT MEETING MINUTES

Groundwater Sustainability Agency for the Western Management Area in the Santa Ynez River Groundwater Basin May 20, 2020

A regular meeting of the Groundwater Sustainability Agency (GSA) for the Western Management Area (WMA) in the Santa Ynez River Groundwater Basin was held on Wednesday, 20 May 2020. As a result of the COVID-19 emergency and Governor Newsom's Executive Orders to protect public health by issuing shelter-in-home standards, limiting public gatherings, and requiring social distancing, this meeting occurred solely via teleconference as authorized by and in furtherance of Executive Order Nos. N-29-20 and N-33-20.

GSA Committee Directors Present: Chris Brooks, Meighan Diethofer (Acting as Alternate), Myron Heavin (Acting as Alternate), Steve Jordan, Jim Mosby

Alternate GSA Committee Director Present: Art Hibbits, Katherine Stewart

Staff Present: Joe Barget, Bill Buelow, Loch Dreizler, Amber Thompson, Kevin Walsh, Kristin Worthley, Matt Young

Others Present: Jose Baer, Zoe Carlson (Dudek), Maygan Cline (GeoSyntec), Ken DaMako, Karen Kistler, Jeannette Lombardo, Christina Lucero (EKI), Miles McCammon (Stetson Engineers), Tim Nicely (GSI), Anita Regmi (DWR)

I. Call to Order and Roll Call

GSA Committee Director Brooks called the meeting to order at 10:02 a.m., welcomed all in attendance and asked Ms. Thompson Call Roll. Three Committee Directors and two Alternates were present providing a quorum.

II. Introductions and Review of SGMA in Santa Ynez River Valley Basin

Mr. Buelow announced names of all phone attendees who introduced themselves.

Mr. Buelow reviewed history of the Sustainable Groundwater Management Act (SGMA) requirements and what has been completed so far in the Santa Ynez River Basin including the creation of the three Groundwater Sustainability Agencies (GSAs) in the Basin (EMA, CMA, WMA), securing Department of Water Resources (DWR) Prop. 1 Grant (Grant) funding, hiring Consultants, coordinating efforts between the eight agencies participating in the three GSAs, and establishing a Citizen Advisory Group (CAG) in each of the Management Areas of the Basin.

III. Additions or Deletions, if any, to the Agenda

No additions or deletions were made.

IV. Public Comment

There was no public comment.

V. Review and Consider Approval of Minutes

GSA Committee Director Brooks submitted the minutes of the meetings of February 26, 2020 for GSA Committee approval.

GSA Committee Director Mosby suggested an amendment to the meeting minutes adding a detail he made to his comment in Item X, “as well as export of water out of Cachuma Lake to the South Coast.”

GSA Committee Director Jordan made a MOTION to approve the minutes as amended. GSA Committee Director Mosby seconded the motion and it passed unanimously by Roll Call vote.

VI. Receive WMA GSA financial update and approve WMA Warrant Lists

Mr. Buelow presented the financial reports of FY 2019-20 Periods 7 through 9 (through March 31, 2020) and the Warrant Lists for January, February and March 2020 for GSA Committee review. There were no comments.

The GSA Committee unanimously approved the January, February and March 2020 Warrant Lists as presented (Nos. 1008 – 1010). GSA Committee Director Jordan made a MOTION to approve the warrant lists and financial reports as submitted. GSA Committee Director Heavin seconded the motion and it passed unanimously by Roll Call vote.

VII. Receive update on GSP activities in the WMA and Basin

Ms. Cline, Geosytec Consultants, along with Zoe Carlson (Dudek) and Miles McCammon, Stetson Engineer, presented an update on the consultants GSP activities in the WMA GSA. The presentation included an update of consultant team activities since the last GSA Committee meeting in February 2020. The presentation included a SGMA overview, GSP milestones timeline, community outreach, review of Draft Technical Memorandum of Data Compilation and Management and review of Draft Technical Memorandum of 3D Geologic Model for the Santa Ynez River Valley Groundwater Basin. The consultants reviewed newly initiated work, ongoing activities, and the next steps to create a SGMA compliant GSP for the WMA GSA.

There was public comment, GSA Committee Member, consultant and staff discussion throughout the presentation.

- Ms. Lombardo, American Agri-Women, voiced concern about the cost for and reliability of data provided by SkyTEM survey and asked about electro-magnetic field concerns with SkyTEM survey. Ms. Cline replied that the electro-magnetic exposure by conducting a SkyTEM survey is estimated to be 1/100 of general exposure, similar to the exposure of standing one-foot from a toaster.

- GSA Committee Director Jordan requested follow-up on nitrate issues and is the Basin's SGMA effort to track nitrates coordinated with the State of California's efforts. Mr. Buelow asked the Stetson team to follow up about nitrate issues and his concerns using some previously published data.

a. Draft Technical Memorandum of Data Compilation and Management

Mr. Buelow presented the Draft Technical Memorandum of Data Compilation and Management. He reported that it is intended as a contractual document to document technical tasks completed by the consultant and includes very technical terms.

b. Draft Technical Memorandum of 3D Geologic Model for the Santa Ynez River Valley Groundwater Basin

Mr. Buelow presented the Draft Technical Memorandum of 3D Geologic Model for the Santa Ynez River Valley Groundwater Basin. He reported it has very technical terms and is not intended for the public. It is intended as a contractual document to document technical tasks completed by the consultant.

GSA Committee Member discussion followed. There was no public comment. Unanimous consensus by GSA Committee Directors was to forward the two Draft Technical Memorandums to EMA CAG for review and comment.

VIII. Receive update on Proposition 68 Grand Award for Aerial Electro-Magnetic Survey of WMA

Mr. Buelow announced Santa Ynez River Water Conservation District, on behalf of the CMA and WMA portions of the Basin, was awarded a \$296,000 grant with requirement of about \$100,000 to be spent by the CMA and WMA GSAs toward SkyTEM survey of the CMA and WMA. The survey should take one to two days possibly in late Summer 2020. The flight path will be a planned route and notification will be made to landowners as well as presentations and outreach made to the public. There was no public comment.

IX. Receive update of WMA Outreach Efforts

Mr. Buelow announced that based on community outreach discussions by the WMA GSA CAG and feedback from public, consultants, with staff input, created a Quarterly Newsletter. The first edition contains a basic SGMA overview for those members of the public not familiar with SGMA. The newsletter will be translated into Spanish and will be distributed by participating agencies in the Basin this summer.

Public comment and discussion followed. Unanimous consensus by GSA Committee Directors was to forward newsletter to WMA CAG for review and comment before publishing.

X. Next WMA Meeting: Monday, August 24, 2020, 10:00 AM, location TBD

Mr. Buelow announced that the next WMA GSA Committee Meeting will be Wednesday, August 26, 2020, 10:00 AM, location TBD. Due to COVID-19 restrictions, it may be held via teleconference call.

XI. WMA GSA Committee requests and comments

Mr. Buelow stating that the Intra-Basin Administrative Agreement for Implementation of the Sustainable Groundwater Management Act in the Santa Ynez River Valley Groundwater Basin (Agreement) had been endorsed by all three GSAs and adopted by all eight GSA Member Agencies in the Basin and is now effective

Mr. Barget, VVCSD, suggested a “SGMA Road Show” to be presented to all participating agency boards to increase stakeholder engagement.

GSA Committee Director Jordan expressed concerns regarding surface water movement and a model used.

Alternate GSA Committee Director Hibbits suggested the committee may want to send a letter to the Governor alerting him to the possible need to adjust timelines due to current COVID-19 restrictions. Mr. Buelow stated a group of GSAs are lobbying legislation for a change to the SGMA statute. However, at this point the GSAs in the Santa Ynez Basin are moving forward with the timeline as if no changes will be made.

XIII. Adjournment

GSA Committee Director Brooks adjourned the meeting at 11:29 a.m. GSA

Chris Brooks, Chairman

William J. Buelow, Secretary

SYRWCD WMA
BALANCE SHEET
JUNE 30, 2020

Assets

Current Assets

Mechanics Bank #8301	\$332,002.49	

TOTAL Current Assets		332,002.49

TOTAL Assets		\$332,002.49
		=====

Liabilities AND Equity

Current Liabilities

Accounts Payable	46,553.52	

TOTAL Current Liabilities		46,553.52

TOTAL Liabilities		46,553.52

Net Position

Retained Earnings	238,814.21	
Retained Earnings-Current Year	46,634.76	

TOTAL Net Position		285,448.97

TOTAL Liabilities AND Equity		\$332,002.49
		=====

SYRWCD WMA
INCOME STATEMENT
FOR THE 12 PERIODS ENDED JUNE 30, 2020

	QUARTER TO DATE		YEAR TO DATE	
	ACTUAL	PERCENT	ACTUAL	PERCENT
Revenue:				
Revenue				
Operating Assessments	\$48,198.36	33.9 %	204,914.67	54.8
Grant Revenue	94,176.90	66.1	168,842.64	45.2
TOTAL Revenue	142,375.26	100.0	373,757.31	100.0
TOTAL Revenue	142,375.26	100.0	373,757.31	100.0
Gross Profit	142,375.26	100.0	373,757.31	100.0
Expenses:				
Operating Expenses				
Outside Staff Support	521.67	.4	821.67	.2
Public Relations	7.06	.0	7.06	.0
TOTAL Operating Expenses	528.73	.4	828.73	.2
Consultants				
General Consultant	.00	.0	188.84	.1
Stakeholder Engagement	32,864.52	23.1	68,658.93	18.4
GSP - DMS	16,276.51	11.4	104,437.42	27.9
GSP - HCM	61,694.20	43.3	75,628.95	20.2
GSP - Water Budget, GW Models	57,129.05	40.1	75,296.68	20.1
GSP - Monitor/Measure	2,039.00	1.4	2,039.00	.5
GSP - Sustainable Mgt Criteria	.00	.0	44.00	.0
TOTAL Consultants	170,003.28	119.4	326,293.82	87.3
TOTAL Expenses	170,532.01	119.8	327,122.55	87.5
Net Income from Operations	(28,156.75)	(19.8)	46,634.76	12.5
Earnings before Income Tax	(28,156.75)	(19.8)	46,634.76	12.5
Net Income (Loss)	\$(28,156.75)	(19.8)%	46,634.76	12.5

**GROUNDWATER SUSTAINABILITY AGENCY FOR THE WESTERN MANAGEMENT AREA (WMA)
IN THE SANTA YNEZ RIVER VALLEY GROUNDWATER BASIN**

APRIL 2020 WARRANT LIST FOR COMMITTEE APPROVAL

<u>NUMBER</u>	<u>DATE</u>	<u>PAYEE</u>	<u>DESCRIPTION</u>	<u>AMOUNT</u>
1011	04/08/20	Santa Ynez River Water Conservation District	1/3 of GSA Member Agency Account Tracking setup & GoDaddy "SantaYnezWater.org" 1 year domain	\$ 228.73
1012	04/08/20	Stetson Engineers	February 2020 Engineering Service (Task Order #1)	\$ 22,197.92
1013	04/08/20	Valley Bookkeeping	FY 2019-20 3rd Quarter Bookkeeping (January, February, March 2020)	\$ 150.00
MONTH TOTAL				\$ 22,576.65

MAY 2020 WARRANT LIST FOR COMMITTEE APPROVAL

<u>NUMBER</u>	<u>DATE</u>	<u>PAYEE</u>	<u>DESCRIPTION</u>	<u>AMOUNT</u>
1014	05/12/20	VOID	VOID	\$ -
1015	05/12/20	Stetson Engineers	March 2020 Engineering Service (Task Order #1)	\$ 73,820.05
MONTH TOTAL				\$ 73,820.05

JUNE 2020 WARRANT LIST FOR COMMITTEE APPROVAL

<u>NUMBER</u>	<u>DATE</u>	<u>PAYEE</u>	<u>DESCRIPTION</u>	<u>AMOUNT</u>
1016	06/15/20	Stetson Engineers	April 2020 Engineering Service (Task Order #1)	\$ 27,581.79
MONTH TOTAL				\$ 27,581.79

TOTAL THIS QUARTER: \$ 123,978.49
--

**GROUNDWATER SUSTAINABILITY AGENCY FOR THE WESTERN MANAGEMENT AREA (WMA)
IN THE SANTA YNEZ RIVER VALLEY GROUNDWATER BASIN**

JULY 2020 WARRANT LIST FOR COMMITTEE APPROVAL

<u>NUMBER</u>	<u>DATE</u>	<u>PAYEE</u>	<u>DESCRIPTION</u>	<u>AMOUNT</u>
1017	07/13/20	Stetson Engineers	May 2020 Engineering Service (Task Order #1)	\$ 46,403.52
1018	07/13/20	Valley Bookkeeping	FY 2019-20 4th Quarter Bookkeeping (April, May, June 2020)	\$ 150.00
				<hr/>
MONTH TOTAL *				\$ 46,553.52
				* FY 19-20

**WESTERN MANAGEMENT AREA
CITIZEN ADVISORY GROUP
MEMORANDUM**

DATE: August 26, 2020
TO: WMA GSA Committee
FROM: WMA Citizen Advisory Group
SUBJECT: June Meetings to Discuss Newsletter and Two Technical Memoranda

Western Management Area (WMA) Citizens Advisory Group (CAG) Members:

CAG Members in attendance June 3: Karen Kistler, and Derek McLeish. The meeting was cancelled due to lack of quorum.

Staff and Consultants in attendance June 3: Joe Barget (VVCSD), Bill Buelow (SYRWCD), Maygan Cline (Geosyntec), Curtis Lawler (Stetson), Kristin Worthley (City of Lompoc), and Matt Young (County of Santa Barbara).

CAG Members in attendance June 25: Jose Baer, Ken Domako, Karen Kistler, Derek McLeish, and Charles Witt

Staff and Consultants in attendance June 25: Joe Barget (VVCSD), Bill Buelow (SYRWCD), Maygan Cline (Geosyntec), Miles McCammon (Stetson), Kristin Worthley (City of Lompoc), and Matt Young (County of Santa Barbara).

Purpose

The WMA GSA Committee requested staff for the GSA agencies to coordinate meetings of the WMA CAG. Through a coordinated effort, the CAG scheduled two meetings via teleconference due to the COVID-19 restrictions. The June 3, 2020 meeting was scheduled to discuss the Draft SGMA Newsletter. However, that meeting did not have a quorum and was cancelled. Comments on the newsletter were then requested via email to accommodate the dealing for distributing the newsletter with eight agencies. No substantive comments were received.

A second meeting was held on June 24, 2020 to review the Draft Technical Memorandum (TM) for Regional Geology and 3D Geologic Model for the Santa Ynez River Valley Groundwater Basin and the Draft Phase 1 TM for Data Compilation for the Santa Ynez River Groundwater Basin Data Management System (WMA and CMA). The two TMs were prepared by the Stetson

Engineer's team. A copy of the documents was made available to the CAG prior to the meeting at www.SantaYnezWater.org.

Comments on Draft Technical Memorandum on Regional Geology and 3D Geologic Model for the Santa Ynez River Valley Groundwater Basin

- The CAG asked about coordination with neighboring basins and a discussion about the only other basin is San Antonio to the north, which is separated from the CMA and WMA by bedrock.
- The CAG discussed the number of wells used by Vandenberg AFB, and which aquifers their wells were screened and how much groundwater was pumped from their wells.
- The CAG asked that Highways 1 and 246 are added to Figures 2, 5 and 6 for orientation purposes.
- CAG requested that legend is revised to be arranged in geologic order on Figures 5 and 6.
- The CAG with Staff discussed how professional judgement in evaluating discrepancies was done. Discussion ensued.
- CAG pointed out that the second paragraph on page 13 (after the bullets) could be rewritten to be clearer.
- CAG requested that geologic symbols for units and contacts between units are added to Figure 2.
- CAG requested that symbols are added to stratigraphic columns and a symbol to differentiate between consolidated and unconsolidated units.
- Karen Kistler liked the idea of using AEM to close data gaps and was very happy to see that the consultants were using Leapfrog to model the geology. Karen was familiar with the software and it is used by IMERYYS. Karen also appreciated that Dibblee was cited throughout the document.
- Derek McLeish also supported using AEM to close data gaps and commented that the Tech Memo was very rigorous and professional.

Comments on the Draft Phase 1 TM for Data Compilation for the Santa Ynez River Groundwater Basin Data Management System (WMA and CMA):

- The CAG asked about there being one or two Databases for the WMA and CMA. Staff clarified there is one data base for the CMA and WMA, but the data is separated within it.
- There was a discussion about what “significant and unreasonable” means pertaining to SGMA.
- The CAG discussed static vs. time series data and data types.
- The CAG discussed what is in the Library of reports and the ability for public to contribute data or studies to the Library.
- The CAG members were asked to give specific comments however, the CAG members have mostly praise for the volume of data entered by the consultants.

Note: The WMA CAG did not provide comments on the SGMA Newsletter.

SANTA YNEZ RIVER VALLEY GROUNDWATER BASIN

Mailing Address: P.O. Box 719

Santa Ynez, CA 93460

Phone: (805) 693-1156

MEMORANDUM

DATE: August, 2020

TO: WMA, CMA and EMA GSA
Committees

FROM: GSA Agency Staff

SUBJECT: Management Area Boundary Modifications

Background

This memorandum describes proposed changes to the internal boundaries of the three management areas (MA) in the Santa Ynez River Valley Groundwater Basin¹ (SYRVGB). The proposed changes to the CMA-EMA boundary are based on a request from the City of Solvang and a further analysis of parcel boundaries and hydrogeologic information. The proposed changes to the CMA-WMA boundary are based on an analysis of the hydrologic and hydrogeologic data by Stetson.

The two consultant teams coordinated together on the proposed changes. Agency Staff from all eight agencies in the Basin reviewed the proposed boundary changes. As the Groundwater Sustainability Plans (GSP) and associated technical memoranda are currently being prepared, the timing of the proposed changes will allow the consultants to proceed with preparing the GSP figures with the new boundaries. The proposed changes are shown in Figures 1 and 2. No changes to the DWR Bulletin 118¹ basin boundaries are proposed herein. None of the proposed changes are considered “material changes” as defined by DWR. Table 1 below summarizes the

¹ The extents of the SYRVGB were determined by the Department of Water Resources in Bulletin 118 (“DWR”) and are based on regional geology studies. The SYRVGB is identified as California basin 3-15.

total acres of the SYRVGB and MAs based on original boundaries and proposed revised boundaries.

Table 1. Area Within Original and Revised Boundaries of the WMA, CMA and EMA (Acres)

	Area within Original Boundaries (Acres)	Area within Revised Boundaries (Acres)	% change
Western Management Area (WMA)	85,300	85,600	0%
Central Management Area (CMA)	21,200	21,000	1%
Eastern Management Area (EMA)	96,500	96,400	0%
Total Santa Ynez River Valley Groundwater Basin	203,000	203,000	0%

Proposed Change to CMA-EMA Internal Boundary

The proposed change to the CMA-EMA boundary adjusts the existing boundary between the CMA and EMA to align with parcel and hydrogeologic boundaries. This change is based on updated Santa Barbara County Assessor parcels maps. Additionally, the existing MA boundary split several parcels. The revised boundary does not split any parcels and follows a topographic and geologic break at the base of Skytt Mesa, on the western side of the City of Solvang. The new boundary coincides with the contact between several geologic units which will simplify water budget calculations. All parcels included in the boundary change were previously part of a GSA. No additional land is subject to the Sustainable Groundwater Management Act (SGMA) as a result of the boundary change, therefore not considered a material change by DWR. Figure 1 shows the original and draft proposed boundary between the CMA-EMA.

Proposed Change to WMA-CMA Internal Boundary

The proposed change to the WMA and CMA boundary is based on the following:

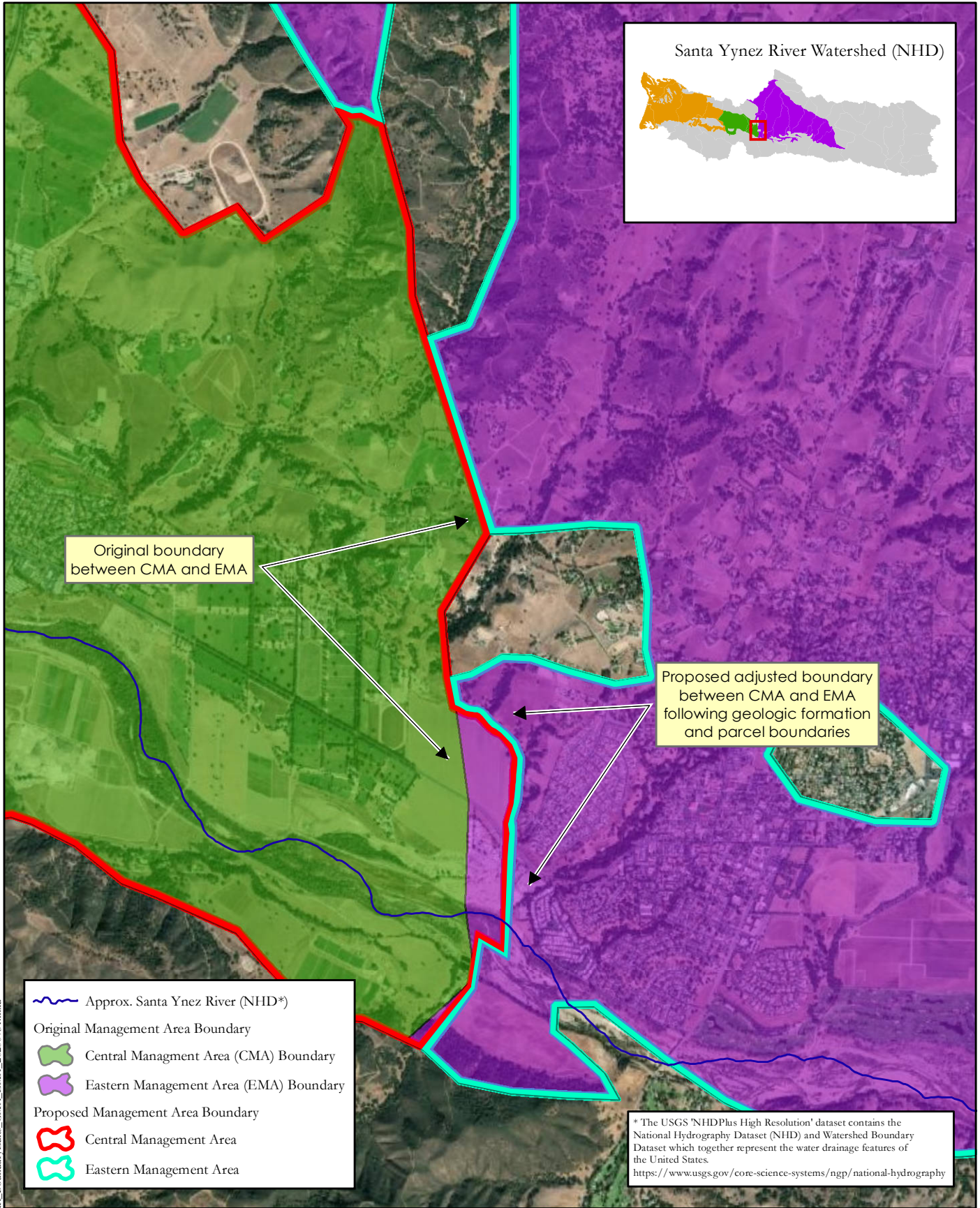
- 1) Aligns the MA boundary with the surface water drainage, the local topography and hydrogeology.
- 2) Encloses a large portion of the Careaga formation within the CMA, which aids in calculations for the water budget.

- 3) Aligns the WMA-CMA GSA boundary to the SYRWCD boundary in the Santa Rita and Buellton Uplands.
- 4) Shortens the boundary between the WMA-CMA, which will simplify water budget calculations.
- 5) Moves the MA boundary at the Santa Ynez River near to a former USGS gauge location (ID 11131000) and a bedrock high. The new boundary is less arbitrary than the previous boundary and will make the calculation of groundwater and surface water flux between the CMA and WMA easier to quantify.

Figure 2 shows the original and draft proposed boundary between the WMA-CMA. All parcels included in the boundary change were previously part of a GSA. No additional land is subject to the Sustainable Groundwater Management Act (SGMA) because of the proposed boundary change, and therefore not considered a material change by DWR.

Once the GSAs have concurred with the change, Staff will formerly update the Geographic Information System (GIS) files and upload the revised GIS files to DWRs SGMA Portal with a letter documenting the changes.

Staff recommendation: Staff recommends that the WMA, CMA and EMA GSAs endorse the proposed boundary changes.



Document Path: I:\jpe2710\Draft_BoundaryEdits_CMA_EMA_20200731.mxd



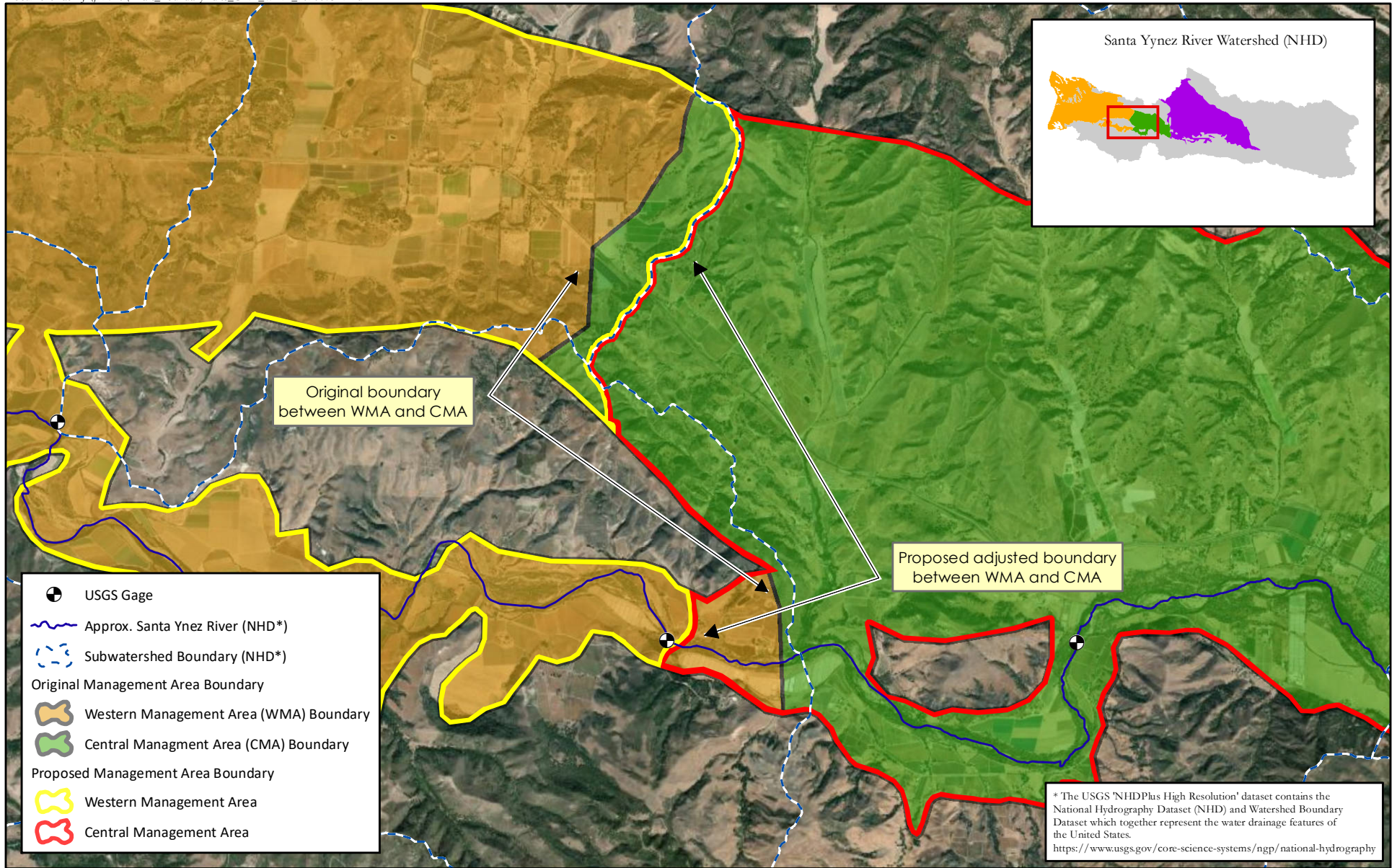
DRAFT
7/31/2020

PROPOSED BOUNDARY ADJUSTMENTS CENTRAL AND EASTERN MANAGEMENT AREAS

Proposed adjusted boundary between CMA and EMA following geologic water-bearing formation boundary and parcels; No exterior DWR Bulletin 118 boundaries are changed.



0 0.25 0.5
Miles



DRAFT
7/31/2020

PROPOSED BOUNDARY ADJUSTMENTS CENTRAL AND WESTERN MANAGEMENT AREAS

0 0.5 1
Miles



This map proposes that internal management area boundaries within the Santa Ynez River Groundwater Basin be redrawn to follow watershed boundaries more accurately and to utilize a historical USGS gage location; no exterior DWR Bulletin 118 boundaries are changed.

WMA GSA Committee Meeting - August 26, 2020



WMA

Santa Ynez River Valley Groundwater Basin
Western Management Area
Groundwater Sustainability Agency

August 2020 Status Update

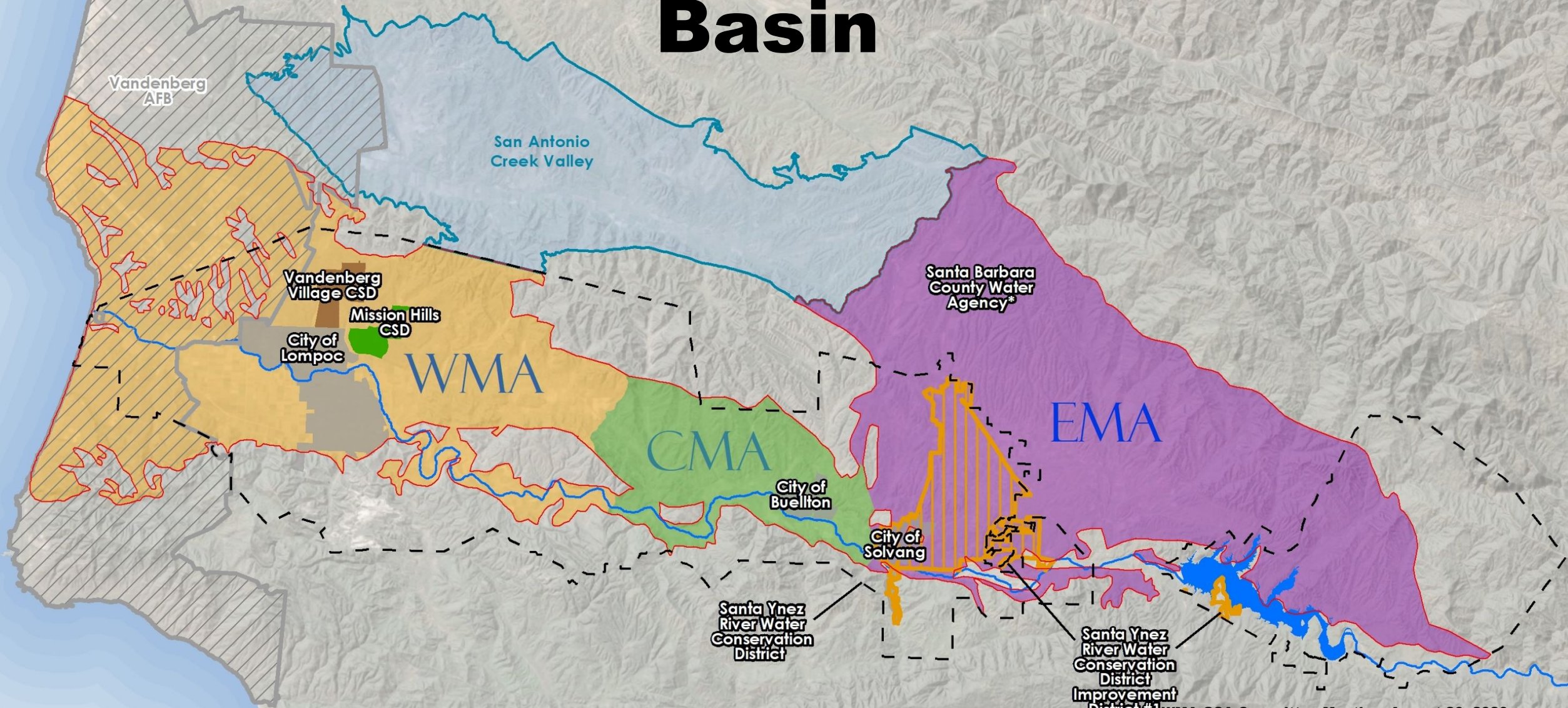




Agenda

1. SGMA & GSA Overview
2. Timeline & Milestones
3. Consultant Team Progress Update
4. Next Steps
5. Schedule
6. Questions

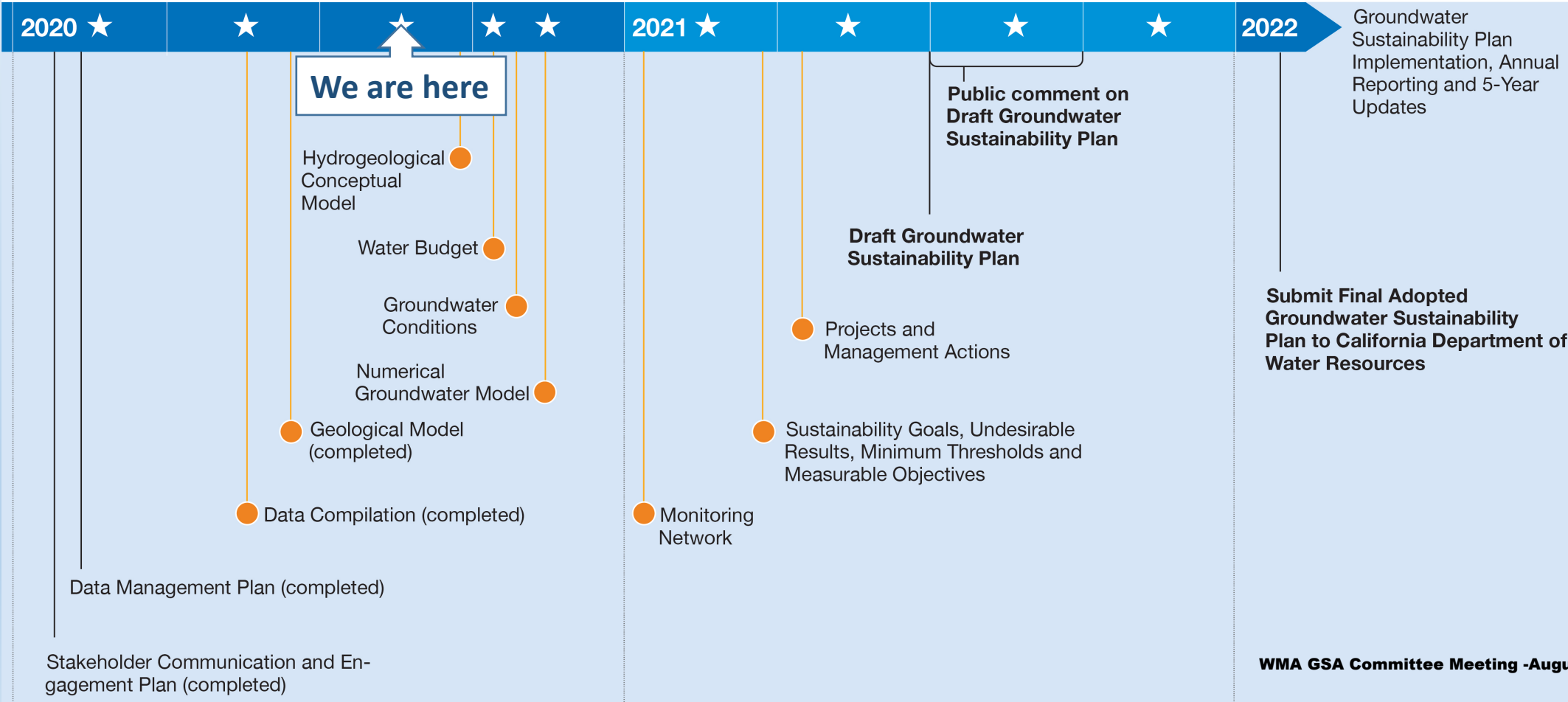
Santa Ynez River Valley Groundwater Basin



Timeline and Milestones

Groundwater Sustainability Plan Development Milestones

★ Groundwater Sustainability Agency Committee Public Meeting ● Technical Memorandum



Consultant Team Progress

Geosyntec consultants

TO: Station Engineers
 SUBJECT: **DRAFT** Technical Memorandum Regional Geology and 3D Geologic Model for the Santa Ynez River Valley Groundwater Basin (SYRVGB). This technical memorandum focuses on the geologic units within the SYRVGB, and the subsurface geologic model built to visualize these units. The geologic units are then considered in a separate study which correlates principal aquifers within the basin. This technical memo identifies the modeled geologic units and existing literature that identifies the water-bearing capability of each unit but does not include an in-depth principal aquifer analysis or discussion.

PREPARED BY: Ryan Torres, Senior Professional Megan Cole, Senior Geologist Mark Grivett, Senior Principal Hydrogeologist

DATE: May 12, 2020

I. INTRODUCTION

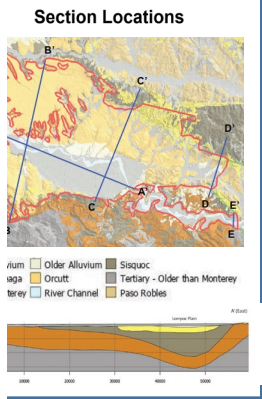
This technical memorandum is prepared as part of the hydrologic conceptual model (HCM) for the Western and Central Management Areas (WMA and CMA, respectively) Groundwater Sustainability Agency (GSA) within the larger Santa Ynez River Valley Groundwater Basin (SYRVGB). This technical memorandum focuses on the geologic units within the SYRVGB, and the subsurface geologic model built to visualize these units. The geologic units are then considered in a separate study which correlates principal aquifers within the basin. This technical memo identifies the modeled geologic units and existing literature that identifies the water-bearing capability of each unit but does not include an in-depth principal aquifer analysis or discussion.

The HCM is the conceptual understanding of the physical characteristics related to the regional hydrology, land use, geologic units and structures, groundwater quality, principal groundwater aquifer, and principal aquifers of the WMA and CMA portions of the SYRVGB (basin). Understanding the regional geologic setting and structural configuration is integral to conducting subsequent technical analysis of the basin, including presence, absence and correlation of principal aquifers. Identification of an appropriate monitoring network, structural geologic modeling, and identification of projects and management actions in accordance with the Sustainable Groundwater Management Act (SGMA).

A detailed subsurface three-dimensional model of the geologic units and structures (model) that comprise the basin was developed from publicly available published reports and data sources from the WMA and CMA GSAs. The model is intended for use as a visualization tool to communicate the regional geologic setting to the WMA and CMA GSAs, as well as the public, in accordance with SGMA. Additionally, the model will be used in concert with the Water Budget and the Data Management System to identify potential data gaps within the basin where additional data is needed.

This technical memorandum does not include the Eastern Management Area (EMA) within the SYRVGB. The EMA GSA is supported by a different consulting team.

Geosyntec | Sellen | Sellen



Sustainable Groundwater Management Quarterly Newsletter No. 1 June 2020

Santa Ynez River Valley Groundwater Basin (SYRVGB)

The Sustainable Groundwater Management Act (SGMA), signed into law in 2014, created a new framework for groundwater management in California. SGMA established a new structure for local groundwater management through Groundwater Sustainability Agencies (GSA). The SYRVGB has three management areas each with their own GSA Committee comprised of local participating Agencies:

- Western Management Area (WMA) GSA Committee**
 - Santa Ynez River Water Conservation District + City of Lompoc
 - Mission Hills CSD + Vandenberg Village CSD
 - Santa Barbara County Water Agency
- Central Management Area (CMA) GSA Committee**
 - Santa Ynez River Water Conservation District + City of Buellton
 - Santa Barbara County Water Agency
- Eastern Management Area (EMA) GSA Committee**
 - Santa Ynez River Water Conservation District + City of Solvang
 - Santa Barbara County Water Agency + Santa Ynez River Water Conservation District, Improvement District No. 1

Each GSA Committee is preparing its own Groundwater Sustainability Plan (GSP) that will describe the path to groundwater sustainability. The GSPs will determine how much groundwater can be used in the future and could include restrictions on pumping.

All three GSPs will be completed in early 2022. Progress updates will be given in each quarterly GSA Committee meeting and draft documents will be available for public review and comment on the website (www.SantaYnezWater.org). Participation by members of the community in developing the GSP is important and each of the GSA Committees has adopted an outreach and engagement plan to guide the public participation process.

Management Areas and Participating Local Agencies in the SYRVGB

For more information, please visit www.SantaYnezWater.org or call (805) 693-1156 ext. 403

DRAFT TECHNICAL MEMORANDUM

211 E. Francisco Blvd., Suite K • San Rafael, California • 94901
 TEL: (415) 457-0700 FAX: (415) 457-1638 e-mail: mike@stetsonengineers.com

TO: GSA Agency Staff WMA Committee CMA Committee
 DATE: May 5, 2020

FROM: Station Engineers
 JOB NO: 271011 - Santa Ynez SGMA

RE: **DRAFT** Phase I Data Compilation for the Santa Ynez River Groundwater Basin (Data Management System (DMA and CMA))

INTRODUCTION

This memorandum describes the first phase of data compilation collected and entered into the data management system (DMS) developed for the Santa Ynez River Valley Groundwater Basin (SYRVGB) Western Management Area (WMA) and Central Management Area (CMA). This is a first step in developing and implementing a Sustainable Groundwater Management Act (SGMA) plan for these portions of the SYRVGB. It is anticipated that there will be additional phases of data that will be entered into the DMS. After each phase of data entry, this memorandum will be updated.

A description of the DMS was provided in the Data Management Plan (DMP), which included overall goals of the DMS, a description of the DMS platform, and how this addresses the needs of SGMA. This memorandum provides a snapshot view of data collected and entered into the DMS as of March 2020.



Geological Model Tech Memo

DRAFT TECHNICAL MEMORANDUM

211 E. Francisco Blvd., Suite K • San Rafael, California • 94901
 TEL: (415) 457-0700 FAX: (415) 457-1638 e-mail: mike@stetsonengineers.com

TO: WMA GSA
 DATE: August 13, 2020

FROM: Station Engineers/Geosyntec/Dudak
 JOB NO: 2714-03

RE: **Hydrogeologic Conceptual Model (HCM)**

TABLE OF CONTENTS

HYDROGEOLOGIC CONCEPTUAL MODEL 6

1. WESTERN MANAGEMENT AREA EXTENTS AND SUBAREAS 7

1.1. WMA BOUNDARIES 8

1.2. WMA SUBAREAS 8

1.2.1. SANTA YNEZ RIVER ALLUVIUM SUBAREA 9

1.2.2. LOMPOC PLAIN SUBAREA 9

1.2.3. BURTON MESA SUBAREA 9

1.2.4. LOMPOC UPLAND SUBAREA 10

1.2.5. SANTA RITA UPLAND SUBAREA 11

2. GEOGRAPHY AND SURFACE WATER BODIES 12

2.1. DIRECT PRECIPITATION 12

2.1.1. SOIL AND INFILTRATION 12

2.2. RUNOFF 13

2.3. WATERSHED AND SIGNIFICANT SURFACE WATER BODIES 13

2.3.1. RIVERS AND STREAMS 14

2.3.2. PACIFIC OCEAN 14

A. LOMPOC PLAIN 16

B. BURTON MESA 16

C. LOMPOC TERRACE 16

2.3.3. WATER IMPORTS 16

2.3.4. WATER EXPORTS 17

2.3.5. TREATED WASTEWATER SOURCES 17

3. ADDITIONAL SURFACE WATER AND GROUNDWATER INTERACTIONS 18

3.1. PRIMARY USE OF GROUNDWATER 18

3.1.1. SANTA YNEZ RIVER ALLUVIUM SUBAREA 18

3.1.2. LOMPOC PLAIN SUBAREA 19

3.1.3. BURTON MESA SUBAREA 19

3.1.4. LOMPOC TERRACE SUBAREA 20

3.1.5. LOMPOC UPLAND SUBAREA 20

3.1.6. SANTA RITA UPLAND SUBAREA 20

3.2. AGRICULTURAL LANDS 21

Hydrogeologic Conceptual Model Page 1

DRAFT HCM Tech Memo

Outreach Newsletter

DRAFT TECHNICAL MEMORANDUM

211 E. Francisco Blvd., Suite K • San Rafael, California • 94901
 TEL: (415) 457-0700 FAX: (415) 457-1638 e-mail: mike@stetsonengineers.com

TO: GSA Agency Staff WMA Committee
 DATE: August 2020

FROM: Station Engineers
 JOB NO: 2710-04

RE: **DRAFT** Western Management Area Water Budget for the Santa Ynez River Valley Groundwater Basin Groundwater Sustainability Plan

This DRAFT Water Budget Technical Memorandum is written for inclusion in a chapter in the Santa Ynez River Valley Groundwater Basin Groundwater Sustainability Plan ("GSP") in accordance with the Sustainable Groundwater Management Act ("SGMA"). The GSP is an interagency collaboration of eight public agencies involved in water resources in Santa Ynez River Valley Groundwater Basin ("SYRVGB"). The SYRVGB is divided into three management areas: Western Management Area ("WMA"), Central Management Area ("CMA"), and Eastern Management Area ("EMA"). This WMA Water Budget Technical Memorandum is prepared by Station Engineers Project Team (Stetson, Geosyntec, and Dudak) for the WMA Groundwater Sustainability Agency ("GSA") in cooperation with CMA and EMA GSAs. Other chapters of the GSP will describe the hydrogeologic conceptual model, management coordination, past and previous management plans, and groundwater conditions in the SYRVGB.

TABLE OF CONTENTS

1. WATER BUDGET LAND AREA AND BOUNDARIES 1.1. SANTA YNEZ RIVER GROUNDWATER BASIN 1.2. SANTA YNEZ RIVER WATERSHED 1.3. NEIGHBORING GROUNDWATER BOUNDARIES

2. WATER BUDGET COMPONENTS 2.1. INTER-BASIN FLOWS 2.1.1. STATE WATER PROJECT 2.1.2. SURFACE WATER INFLOW AND OUTFLOW 2.1.3. GROUNDWATER INFLOW AND OUTFLOW 2.2. GROUNDWATER DISCHARGE/PUMPING

WATER IMPORTS PELINE AND SAN ANTONIO WELLS IN AND AROUND CENTRAL MANAGEMENT AREAS

DRAFT Water Budget

DMS Tech Memo & Data Collection

Progress Report

211 E. Francisco Blvd., Suite K • San Rafael, California • 94901
 Phone: (415) 457-0700 FAX: (415) 457-1638 Web Site: www.stetsonengineers.com

JN 2710 Lompoc Model Progress Report

The conceptualization and physical extents of the FEMFLOW3D groundwater flow model is being converted to the finite difference MODFLOW-LSG model code (LDMPOC-LSG). The modeling work completed through this billing period are summarized in the following bullet points. The attached table presents the LDMPOC-LSG model packages and model conversion progress.

- GIS was used to map the FEMFLOW3D model structure into polygons for the LSG model - developing six layers and 29,055 active cells. Cell discretization provided the horizontal extent and vertical elevation for each model cell. The grid system represents the geologic structure of the aquifers in the Lompoc Area.
- All model layers are coarsely specified which allow the model layer types to convert between confined and unconfined depending on the water level conditions.
- Model simulation period was extended from 357 monthly stress periods (January 1983 through September 2012) to 456 monthly stress periods (October 1982 and September 2020).
- FEMFLOW3D hydraulic properties (Kxy, Sz) and specified fluxhead (subflow beneath river, lagoons) were transferred into MODFLOW-LSG.
- Using USGS hydrologic survey, the Santa Ynez River and 12 tributaries were mapped onto layer 1 model cells to develop the Streamflow Routing package for the model.
- Modeling conference calls were had to streamline model conversion from FEMFLOW3D into MODFLOW-LSG.
- Digital land use maps were compiled for 17 years (every two years from 1984 to 2016). Seven categories were delineated by model cell for assigning recharge and evapotranspiration. (Appendix 1)
- Pumping distribution was developed for 187 alluvial irrigation wells, 7 upland irrigation wells, and 4 residential wells. Assigned pumping by well was transferred for Lompoc, Mission Hills, and Vandenberg Village wells. (Figure 1)

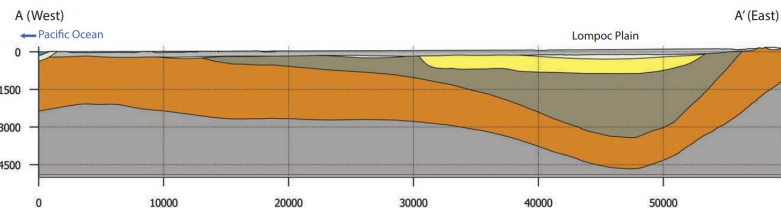
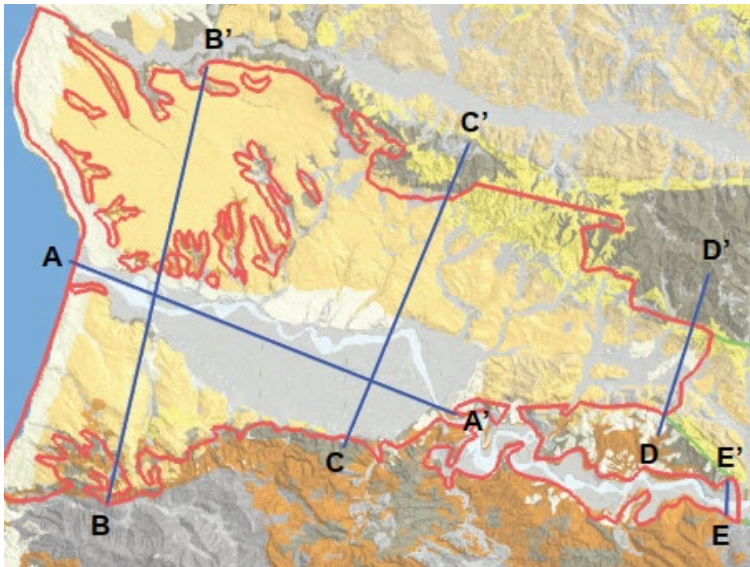
Stetson Engineers Inc. Page 1

WMA GSA Committee Meeting - August 26, 2020 Groundwater Modeling Page 22

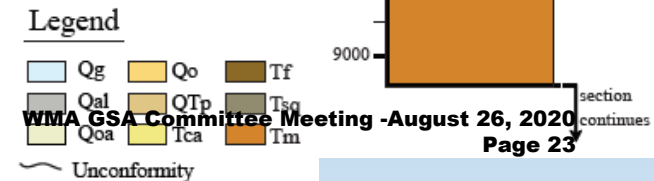
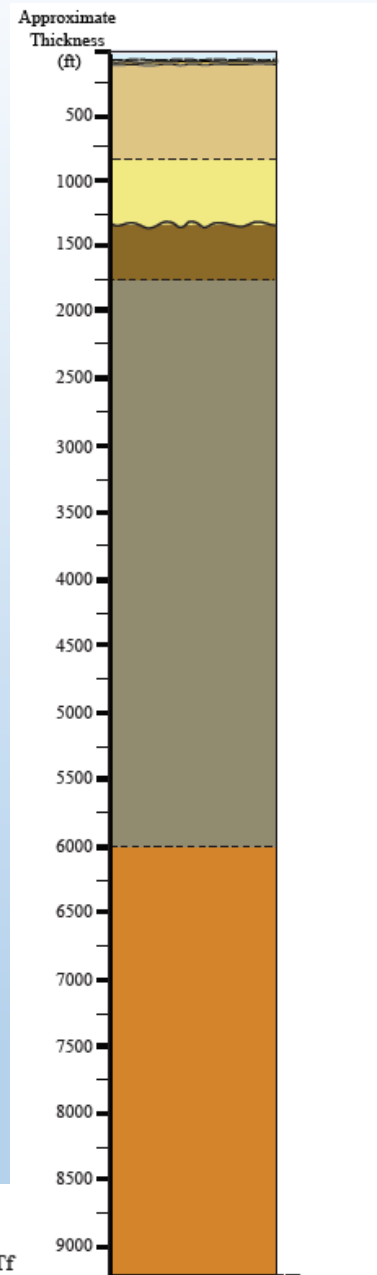
Geologic Model

Technical Memorandum

Section Locations



- Released for CAG and public review
- Comments reviewed and considered
- Revised DRAFT Final submitted to the GSA committee
- SkyTEM data may be used later to refine the model



Outreach & Engagement

Sustainable Groundwater Management Quarterly Newsletter No. 1 June 2020

Santa Ynez River Valley Groundwater Basin (SYRVGB)

The Sustainable Groundwater Management Act (SGMA), signed into law in 2014, created a new framework for groundwater management in California. SGMA established a new structure for local groundwater management through Groundwater Sustainability Agencies (GSAs). The SYRVGB has three management areas each with their own GSA Committee comprised of local participating Agencies:

Western Management Area (WMA) GSA Committee

- Santa Ynez River Water Conservation District • City of Lompoc
- Mission Hills CSD • Vandenberg Village CSD
- Santa Barbara County Water Agency

Central Management Area (CMA) GSA Committee

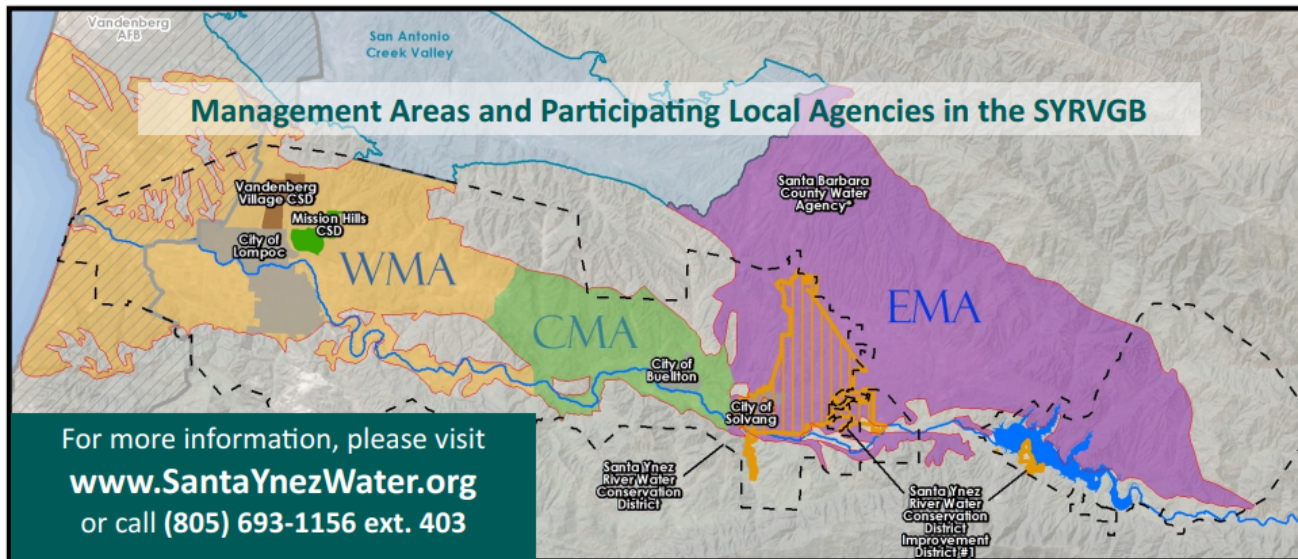
- Santa Ynez River Water Conservation District • City of Buellton
- Santa Barbara County Water Agency

Eastern Management Area (EMA) GSA Committee

- Santa Ynez River Water Conservation District • City of Solvang
- Santa Barbara County Water Agency • Santa Ynez River Water Conservation District, Improvement District No. 1

Each GSA Committee is preparing its own Groundwater Sustainability Plan (GSP) that will describe the path to groundwater sustainability. **The GSPs will determine how much groundwater can be used in the future and could include restrictions on pumping.**

All three GSPs will be completed in early 2022. Progress updates will be given in each quarterly GSA Committee meeting and draft documents will be available for public review and comment on the website (www.SantaYnezWater.org). **Participation by members of the community in developing the GSPs is important and each of the GSA Committees has adopted an outreach and engagement plan to guide the public participation process.**



First Newsletter Created

- English and Spanish versions
- CAG feedback
- Distributed in Water Bills
- Available online at: SantaYnezWater.org

FAQs in development and will be available on SantaYnezWater.org

DMS Tech Memo and Data Update



DRAFT TECHNICAL MEMORANDUM

2171 E. Francisco Blvd., Suite K • San Rafael, California • 94901
TEL: (415) 457-0701 FAX: (415) 457-1638 e-mail: miles@mstetsonengineers.com

TO: GSA Agency Staff
WMA Committee
CMA Committee

DATE: May 5, 2020

FROM: Stetson Engineers

JOB NO: 2710/11 - Santa Ynez
SGMA

RE: **DRAFT** Phase I Data Compilation for the Santa Ynez River Groundwater Basin
Data Management System (WMA and CMA)

INTRODUCTION

This memorandum describes the first phase of data compilation collected and entered in to the data management system (DMS) developed for the Santa Ynez River Valley Groundwater Basin (SYRVGB) Western Management Area (WMA) and Central Management Area (CMA). This is a first step in developing and implementing a Sustainable Groundwater Management Act (SGMA) plan for these portions of the SYRVGB. It is anticipated that there will be additional phases of data that will be entered into the DMS. After each phase of data entry, this memorandum will be updated.

A description of the DMS was provided in the Data Management Plan (DMP), which included overall goals of the DMS, a description of the DMS platform, and how this addresses the needs of SGMA. This memorandum provides a snapshot view of data collected and entered into the DMS as of March 2020.



*Lompoc Plain well pictured during field survey

- DMS Tech Memo released for CAG and public review.
- Comments considered and Revised DRAFT Final submitted to GSA.

DMS Update:

- Collected field data incorporated
- Groundwater levels for USBR wells updated through June 2020
- Review data provided by the SYRWCD (Parent District)

Hydrogeologic Conceptual Model (HCM)

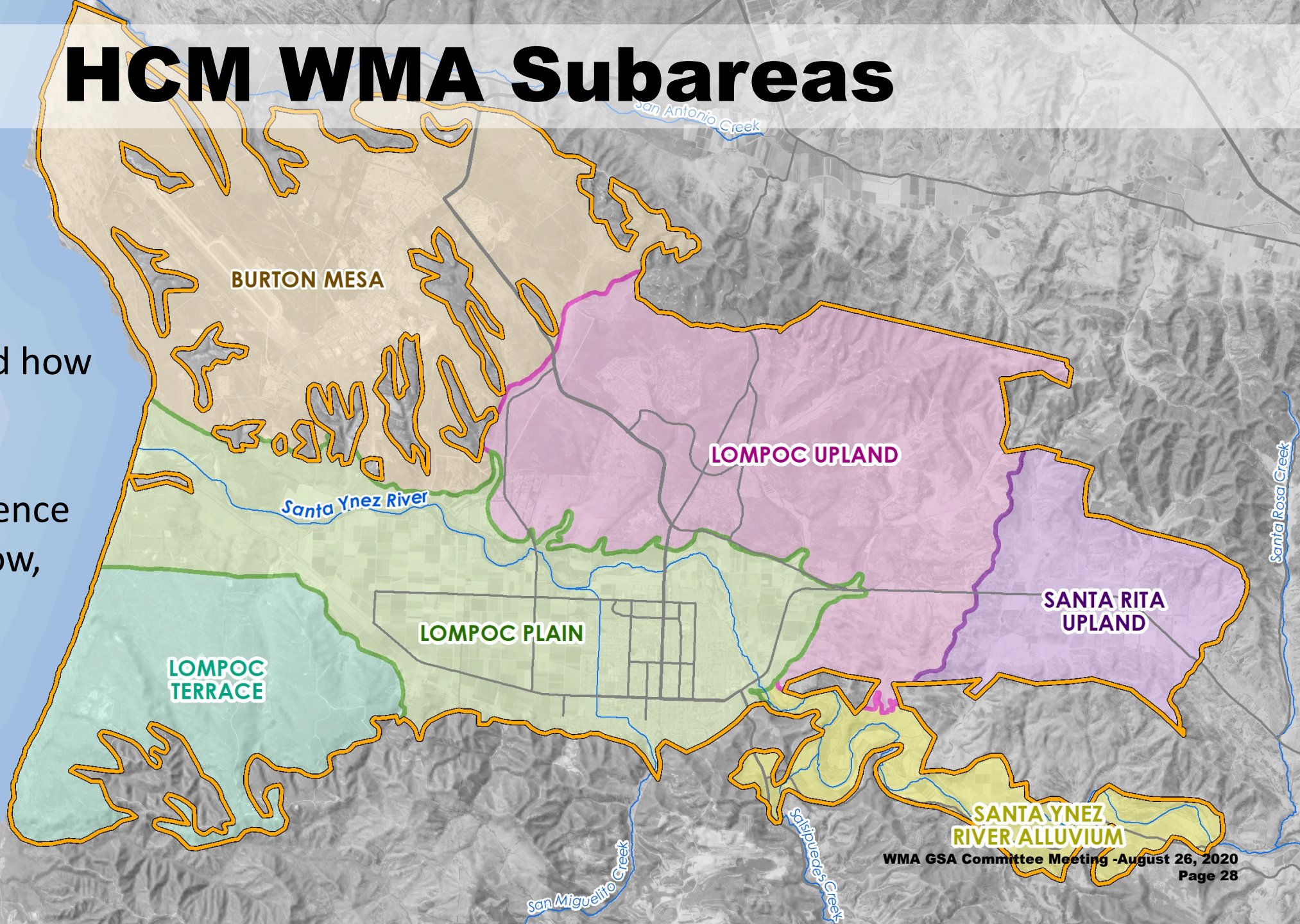
Describes the conceptual understanding of the general physical characteristics of the groundwater basin.

The Hydrogeological Conceptual Model consists of:

- Written narrative description
- Graphics that clearly portray the geographic and climatic setting, regional geology and structures, groundwater basin geometry, general groundwater water quality, and consumptive water uses in the basin.

HCM WMA Subareas

HCM provides descriptions of the WMA Subareas and how they contribute to groundwater and surface water presence and/or absence, flow, and storage

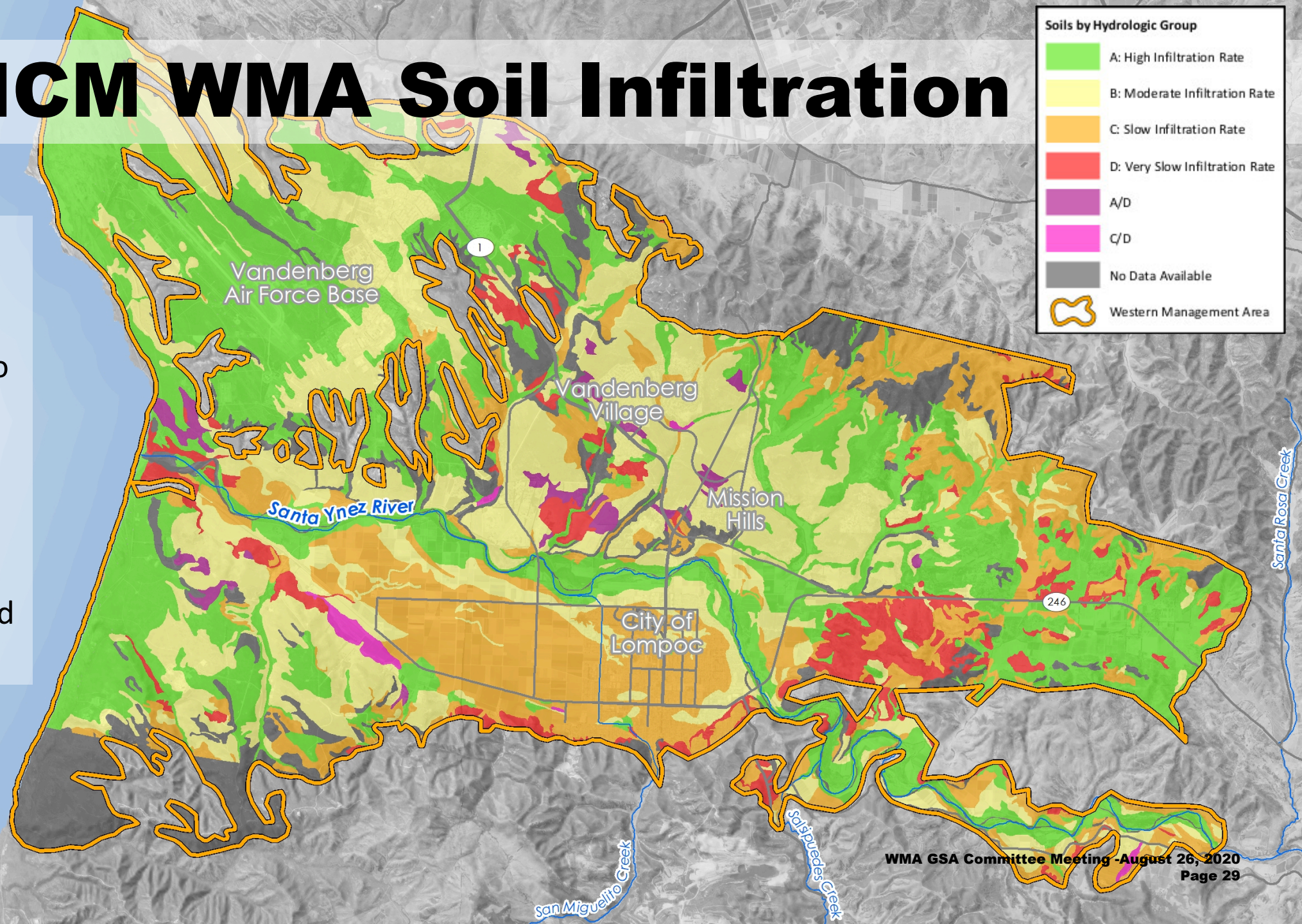
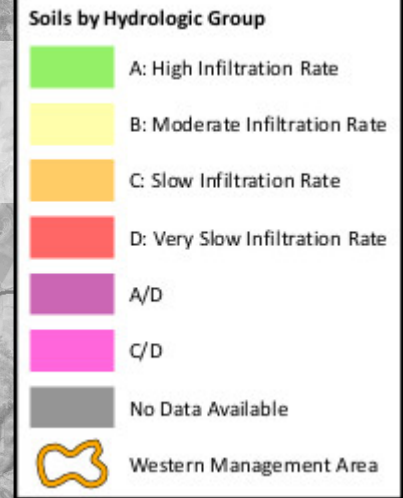


HCM WMA Soil Infiltration

HCM presents the various soil types within the WMA and how they contribute to groundwater recharge and return flows.

PACIFIC OCEAN

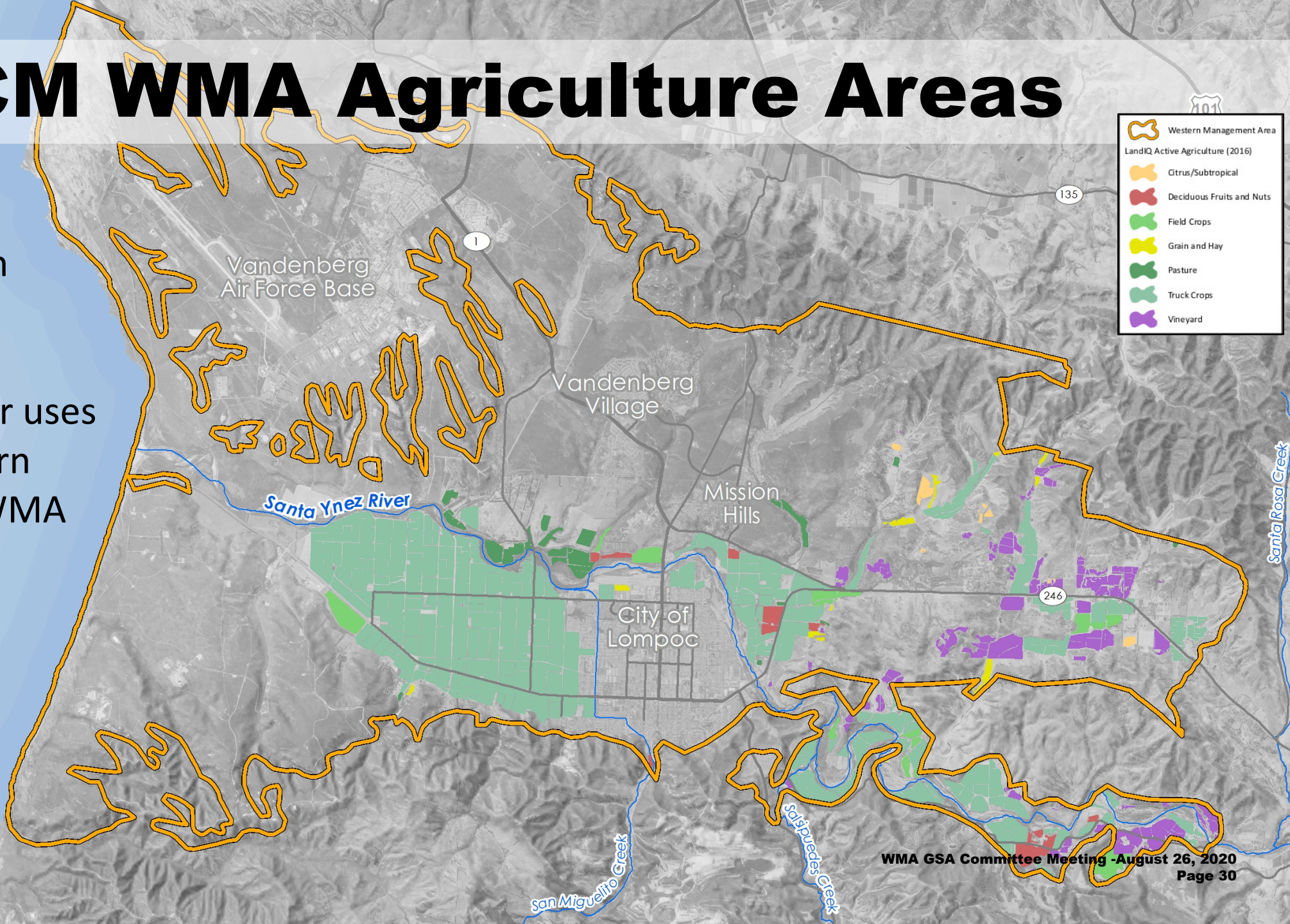
The various soil types contributions to recharge are quantified in the Water Budget.



HCM WMA Agriculture Areas

In accordance with SGMA, the HCM evaluates various consumptive water uses and potential return flows within the WMA

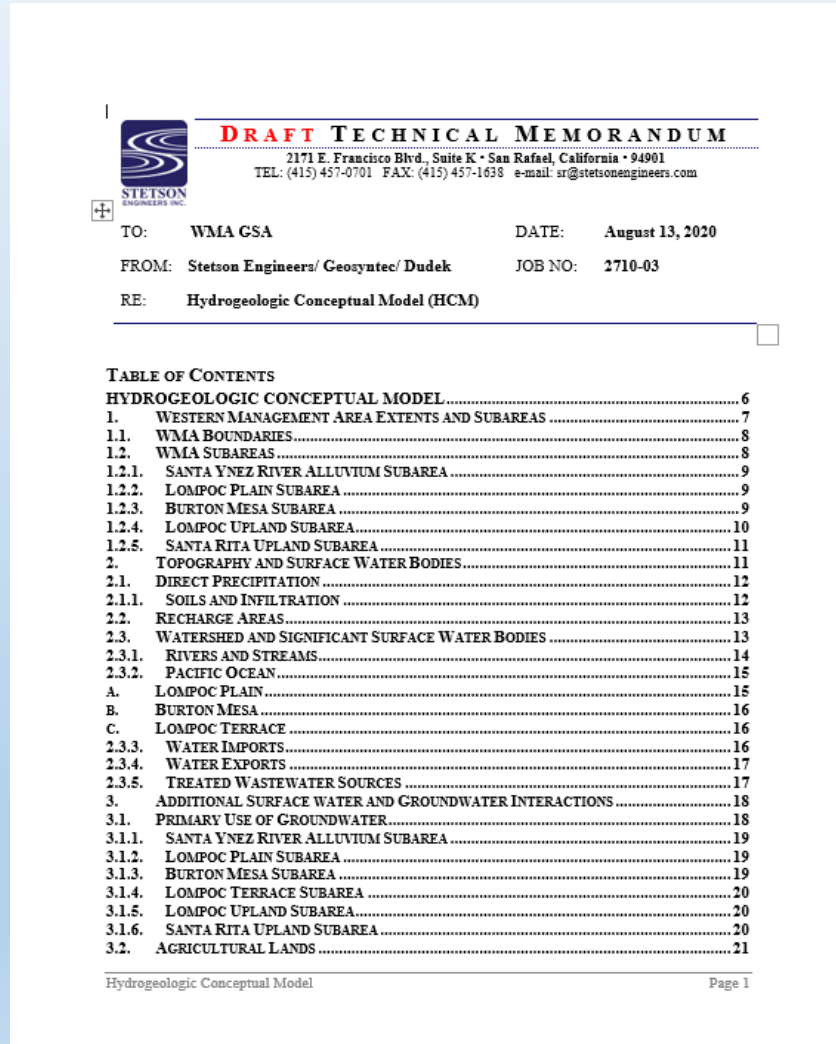
- Western Management Area
- LandIQ Active Agriculture (2016)
 - Citrus/Subtropical
 - Deciduous Fruits and Nuts
 - Field Crops
 - Grain and Hay
 - Pasture
 - Truck Crops
 - Vineyard



PACIFIC OCEAN

*2016 agriculture areas shown as provided by DWR

Hydrogeologic Conceptual Model (HCM)



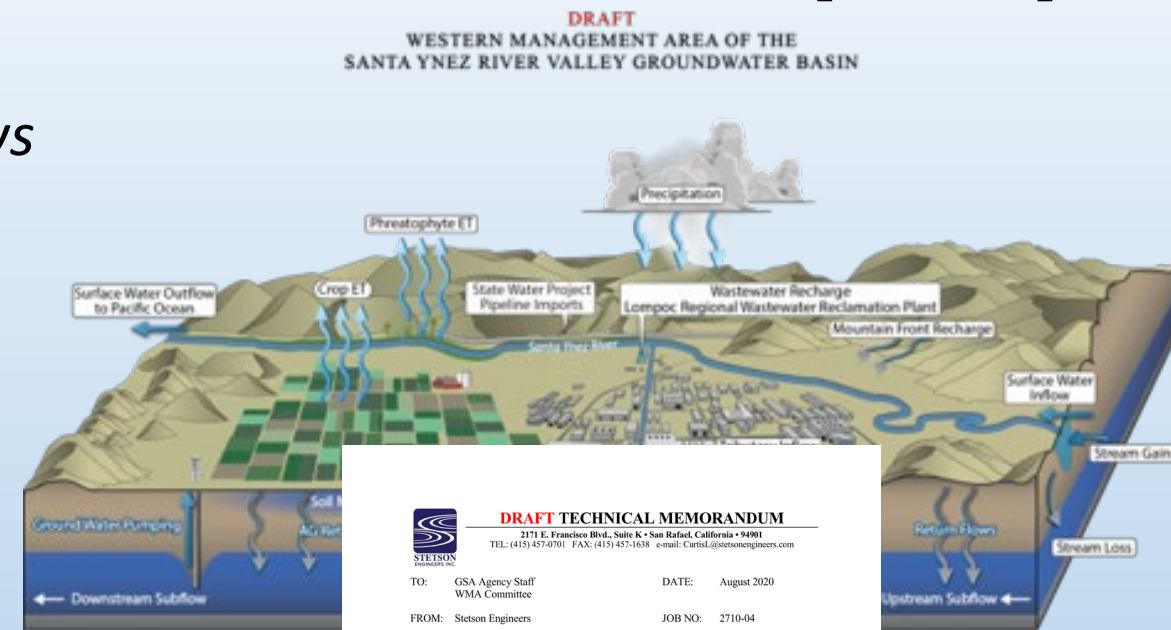
- DRAFT HCM released to Staff in Aug
- Release to GSA committee at next meeting
- Plan to workshop the information for the GSA, public and CAG

Water Budget Technical Memo (TM)

The accounting and characterization of spatial and temporal distribution of inflows and outflows to a watershed, groundwater basin, or management area.

Key Water Budget components:

- Total surface water entering and leaving the basin
- Inflows and outflows to the groundwater system
- The annual change in groundwater storage volume



DRAFT
WESTERN MANAGEMENT AREA OF THE
SANTA YNEZ RIVER VALLEY GROUNDWATER BASIN

DRAFT TECHNICAL MEMORANDUM
2171 E. Francisco Blvd., Suite K • San Rafael, California • 94901
TEL: (415) 457-0701 FAX: (415) 457-1638 e-mail: Carl@stetsonengineers.com

TO: GSA Agency Staff
WMA Committee

DATE: August 2020

FROM: Stetson Engineers

JOB NO: 2710-04

RE: **DRAFT** Western Management Area Water Budget for the Santa Ynez River Valley Groundwater Basin Groundwater Sustainability Plan

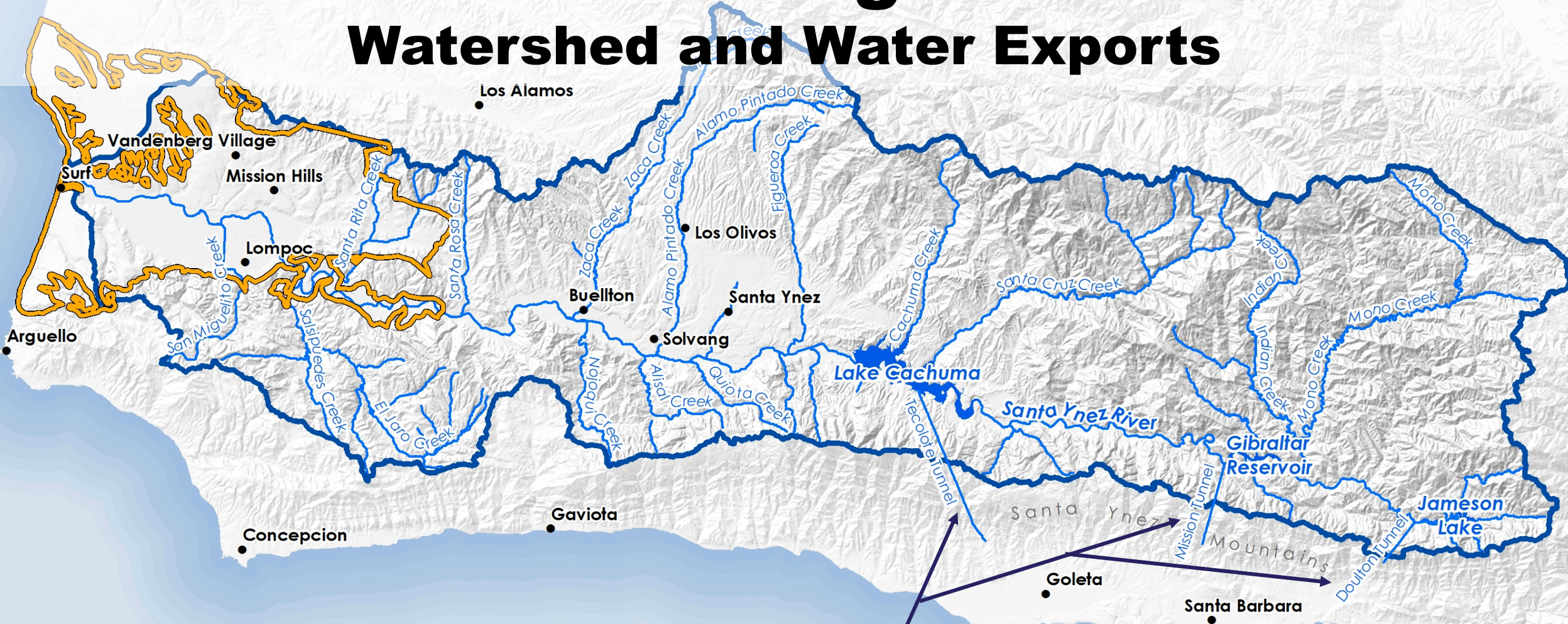
This DRAFT Water Budget Technical Memorandum is written for inclusion as a chapter in the Santa Ynez River Valley Groundwater Basin Groundwater Sustainability Plan ("GSP") in accordance with the Sustainable Groundwater Management Act ("SGMA"). The GSP is an interagency collaboration of eight public agencies involved in water resources in Santa Ynez River Valley Groundwater Basin ("SYRVGB"). The SYRVGB is divided into three management areas: Western Management Area ("WMA"), Central Management Area ("CMA"), and Eastern Management Area ("EMA"). This WMA Water Budget Technical Memorandum is prepared by Stetson Engineers Project Team (Stetson, Geosyntec, and Duck) for the WMA Groundwater Sustainability Agency ("GSA") in cooperation with CMA and EMA GSAs. Other chapters of the GSP will describe the hydrogeologic conceptual model, management coordination, past and previous management plans, and groundwater conditions in the SYRVGB.

TABLE OF CONTENTS

- 1. WATER BUDGET LAND AREA AND BOUNDARIES
 - 1.1. SANTA YNEZ RIVER GROUNDWATER BASIN
 - 1.2. SANTA YNEZ RIVER WATERSHED
 - 1.3. NEIGHBORING GROUNDWATER BOUNDARIES
- 2. WATER BUDGET COMPONENTS
 - 2.1. INTER-BASIN FLOWS
 - 2.1.1. STATE WATER PROJECT
 - 2.1.2. SURFACE WATER INFLOW AND OUTFLOW
 - 2.1.3. GROUNDWATER INFLOW AND OUTFLOW
 - 2.2. GROUNDWATER DISCHARGE/PUMPING

Water Budget TM

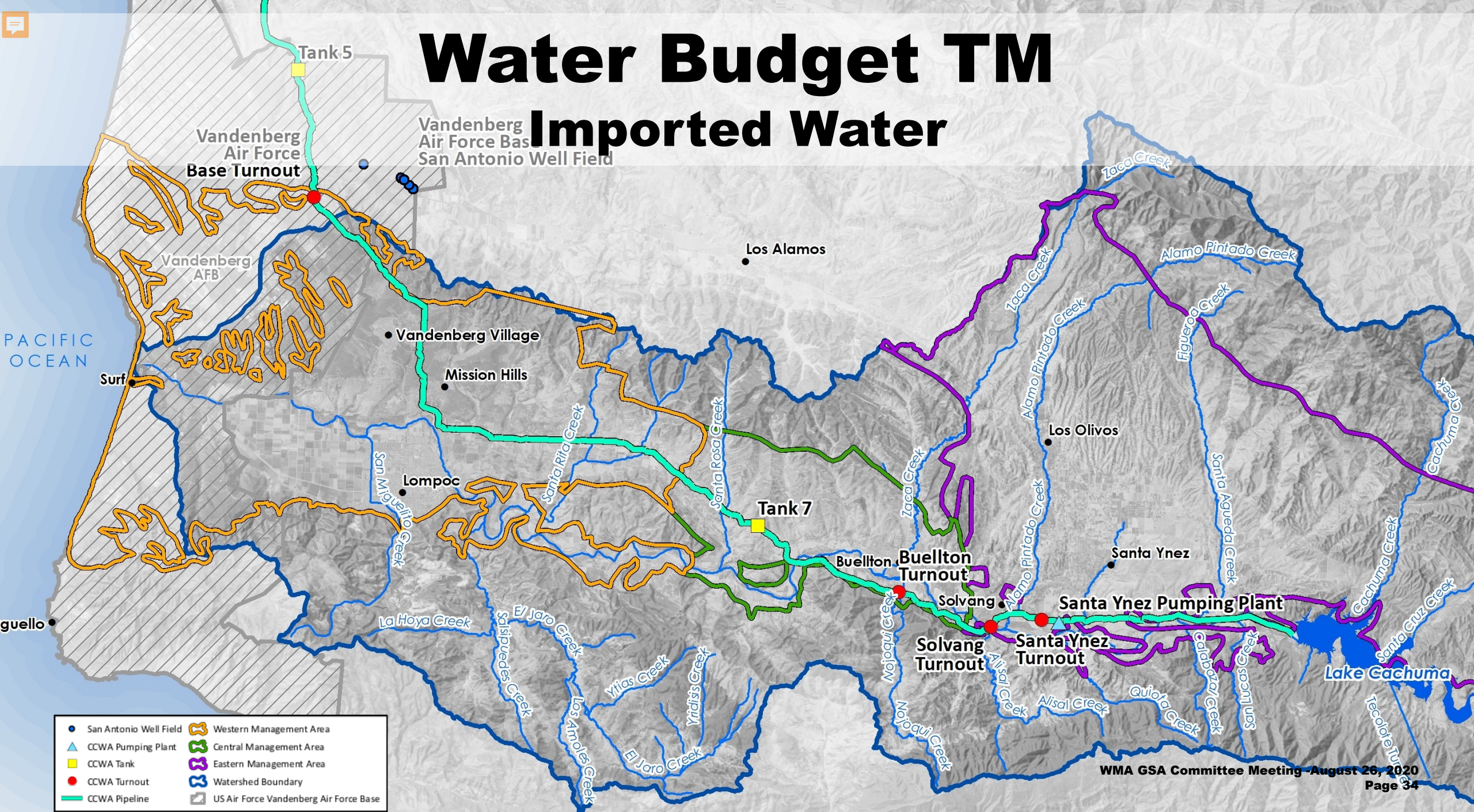
Watershed and Water Exports



Water deliveries to South County via Tecolote, Mission and Daulton Tunnels considered in water budget

Water Budget TM

Imported Water



- San Antonio Well Field
- ▲ CCWA Pumping Plant
- CCWA Tank
- CCWA Turnout
- CCWA Pipeline
- Western Management Area
- Central Management Area
- Eastern Management Area
- Watershed Boundary
- US Air Force Vandenberg Air Force Base

Water Budget TM



DRAFT TECHNICAL MEMORANDUM

2171 E. Francisco Blvd., Suite K • San Rafael, California • 94901
TEL: (415) 457-0701 FAX: (415) 457-1638 e-mail: sr@stetsonengineers.com



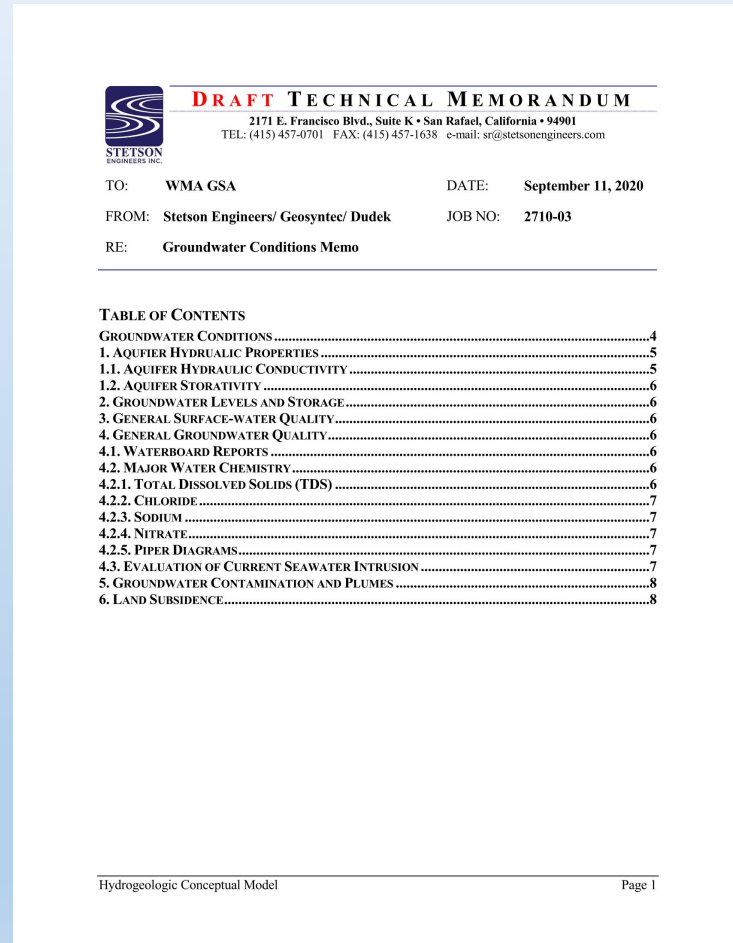
TO: WMA GSA DATE: August 13, 2020
FROM: Stetson Engineers/ Geosyntec/ Dudek JOB NO: 2710-03
RE: Hydrogeologic Conceptual Model (HCM)

TABLE OF CONTENTS

HYDROGEOLOGIC CONCEPTUAL MODEL.....	6
1. WESTERN MANAGEMENT AREA EXTENTS AND SUBAREAS	7
1.1. WMA BOUNDARIES.....	8
1.2. WMA SUBAREAS	8
1.2.1. SANTA YNEZ RIVER ALLUVIUM SUBAREA	9
1.2.2. LOMPOC PLAIN SUBAREA	9
1.2.3. BURTON MESA SUBAREA	9
1.2.4. LOMPOC UPLAND SUBAREA.....	10
1.2.5. SANTA RITA UPLAND SUBAREA	11
2. TOPOGRAPHY AND SURFACE WATER BODIES.....	11
2.1. DIRECT PRECIPITATION	12
2.1.1. SOILS AND INFILTRATION	12
2.2. RECHARGE AREAS.....	13
2.3. WATERSHED AND SIGNIFICANT SURFACE WATER BODIES	13
2.3.1. RIVERS AND STREAMS.....	14
2.3.2. PACIFIC OCEAN.....	15
A. LOMPOC PLAIN.....	15
B. BURTON MESA	16
C. LOMPOC TERRACE	16
2.3.3. WATER IMPORTS.....	16
2.3.4. WATER EXPORTS	17
2.3.5. TREATED WASTEWATER SOURCES	17
3. ADDITIONAL SURFACE WATER AND GROUNDWATER INTERACTIONS	18
3.1. PRIMARY USE OF GROUNDWATER.....	18
3.1.1. SANTA YNEZ RIVER ALLUVIUM SUBAREA	19
3.1.2. LOMPOC PLAIN SUBAREA	19
3.1.3. BURTON MESA SUBAREA	19
3.1.4. LOMPOC TERRACE SUBAREA	20
3.1.5. LOMPOC UPLAND SUBAREA.....	20
3.1.6. SANTA RITA UPLAND SUBAREA	20
3.2. AGRICULTURAL LANDS	21

- Plan to release DRAFT Water Budget TM to Staff in Sep
- Plan to release to GSA committee at Oct meeting
- Plan to workshop the information for the GSA, public and CAG

Groundwater Conditions TM

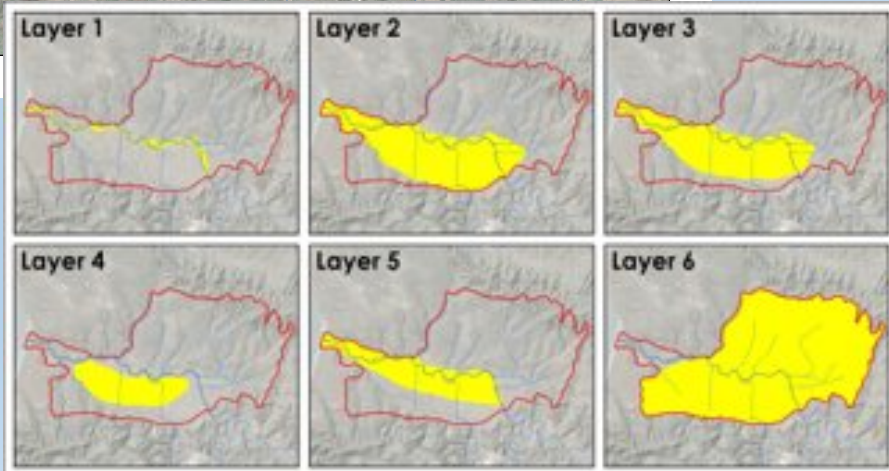
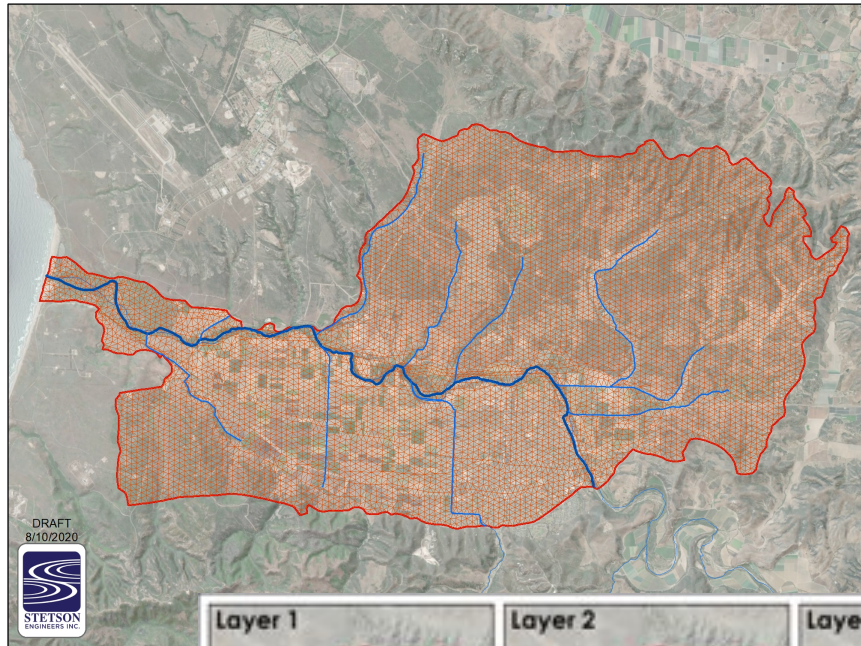


DRAFT document in progress, discusses:

- Principal aquifers and water levels
- Aquifer properties and storage
- Groundwater quality
- Surface water
- Seawater intrusion
- Land subsidence

**"description of current and historical groundwater conditions in the basin [...], based on the best available information"
23 CCR § 354.14(a)**

Groundwater Model



Utilize existing data to prepare MODFLOW-USG groundwater model:

- MODFLOW-USG model grid (architecture) under construction
- Model inputs include precipitation, evapotranspiration, subflow, recharge, stream-flow, conductivity, aquifer properties
- Model groundwater years 1982 - 2018

Next Steps



Special GSA Meeting / Workshop in October to review DRAFT documents:

- Hydrogeologic Conceptual Model Technical Memo
- Water Budget Technical Memo

Regularly scheduled GSA Meeting / Workshop in November to review:

- Groundwater Conditions Technical Memo
- Groundwater Modeling Technical Memo

Groundwater modeling construction, calibration and simulations



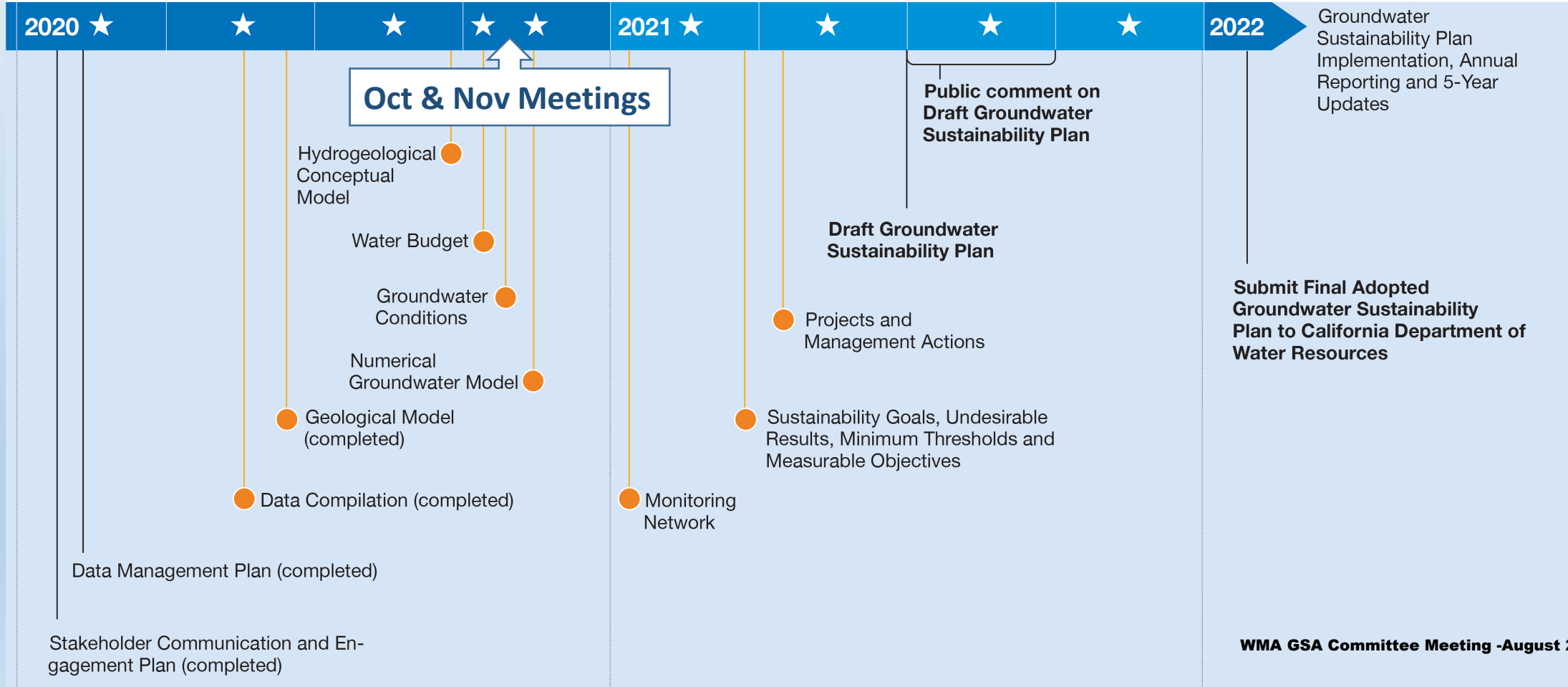
Stars denote items for public engagement and opportunities to review and provide comment



The Way Ahead

Groundwater Sustainability Plan Development Milestones

★ Groundwater Sustainability Agency Committee Public Meeting ● Technical Memorandum



Questions?

Santa Ynez Water Group

Board of Directors, Santa Ynez River Valley Basin Eastern Management Area GSA
Board of Directors, Santa Ynez River Valley Basin Central Management Area GSA
Board of Directors, Santa Ynez River Valley Basin Western Management Area GSA

c/o William (Bill) Buelow
Santa Ynez River Water Conservation District
3669 Sagunto Street, Suite 101
Santa Ynez, CA 93460

Transmitted via email attachment to bbuelow@syrwcd.com

Re: Santa Ynez Water Group

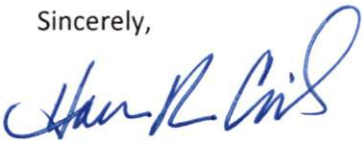
Dear Directors and Staff:

The purpose of this letter is to introduce the Santa Ynez Water Group (SYWG) to the Santa Ynez River Valley GSAs. SYWG is a landowner group that was formed to work together to understand, evaluate, and manage the impacts to our various businesses and engage in positive dialogue with the GSAs. SYWG includes, vineyards, vegetables interests currently, 47 owners representing 4,010 acres in the Santa Ynez River Valley Basin. SYWG desires to work cooperatively and collaboratively with the GSAs on planning issues that will impact sustainable management of the groundwater basin and our business. It is our hope that the GSAs will engage with our group and consider our input throughout process to develop and implement the GSPs.

We have engaged Bryan Bondy, PG, CHG as our consultant to review and advise SYWG. Mr. Bondy's contact is 805.212.0484 and email bryan@bondygroundwater.com. We would ask your organizations to work directly with Mr. Bondy as he comes up to speed and will have some information requests.

Please feel free to reach out to the undersigned if you have any questions.

Sincerely,



Doug Circle
Rancho Cañada de Los Pinos LLC
Santa Ynez, CA
714.630.0299
doug@circlevision.com

cc: Bryan Bondy, Bondy Groundwater Consulting, Inc.